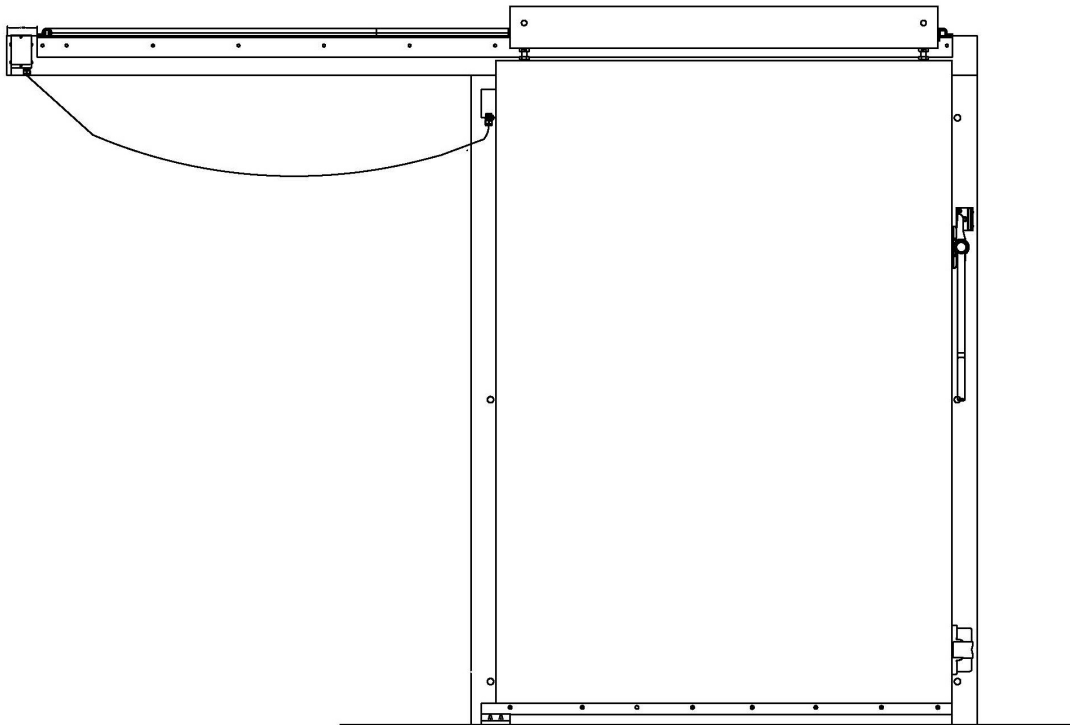




## Installation Manual For Lidl Manually Operated Cold Storage Door



Left slide shown

For Model :

**SHM – Single Horizontal Manual**

Revised: 10 October 2022

# IMPORTANT

---

THIS DOOR ASSEMBLY HAS BEEN CUSTOM DESIGNED AND MANUFACTURED FOR THIS OPENING. REVIEW INSTALLATION INSTRUCTIONS THOROUGHLY **BEFORE** INSTALLING DOOR UNIT.

**DO NOT ATTEMPT TO  
ALTER, CUT, MODIFY, REMOVE,  
DIS-ASSEMBLE AND RE-ASSEMBLE  
OR RE-MANUFACTURE  
ANY COMPONENT  
FROM IT'S ORIGINAL FACTORY CONDITION!**

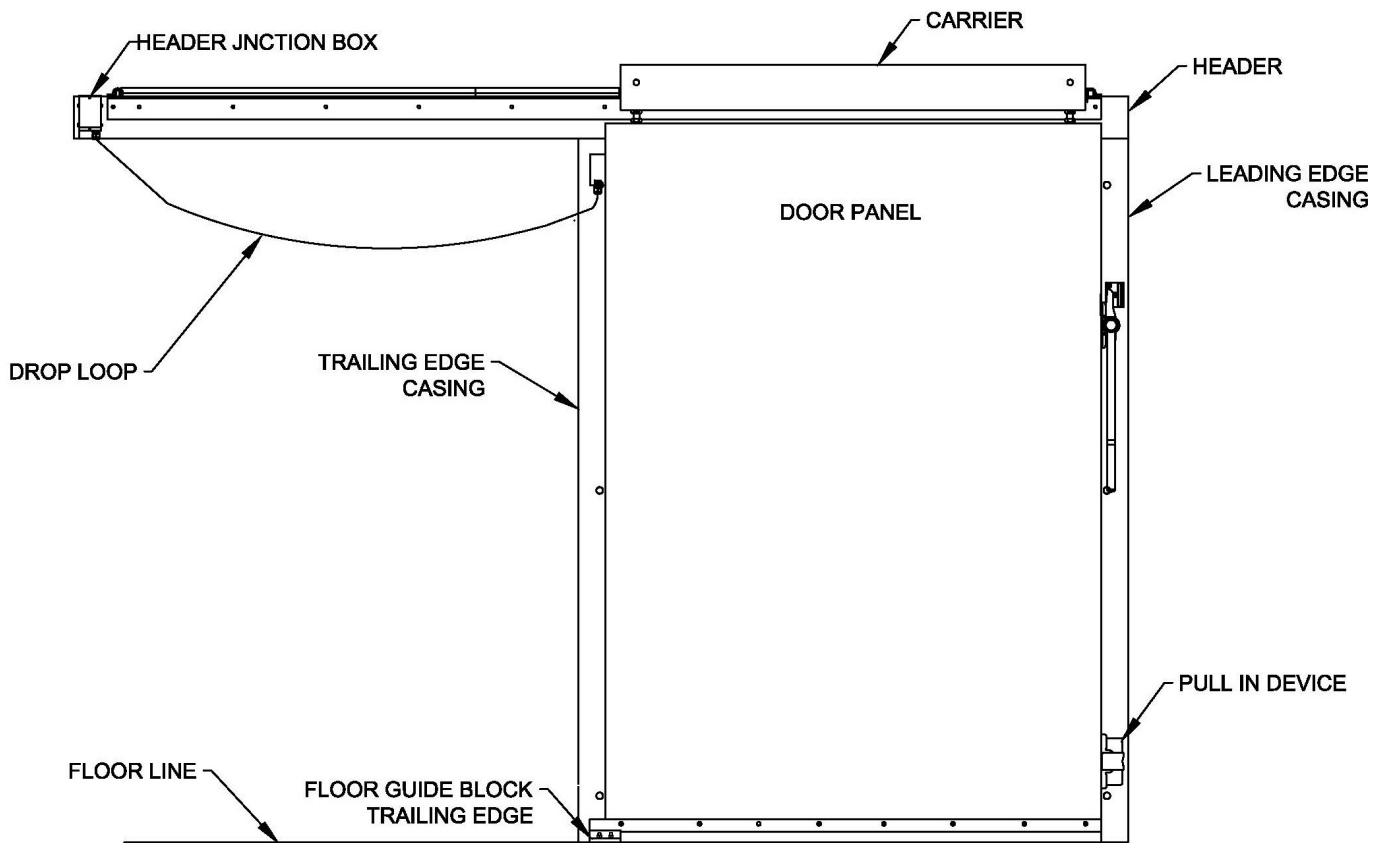
**ANY MODIFICATION TO THIS DOOR ASSEMBLY  
WILL VOID THE WARRANTY IN IT'S ENTIRETY!**

# Table of Contents

<b>INTRODUCTION</b>	1
GENERAL ARRANGEMENT	2
<b>SECTION 1</b>	
HEADER AND VERTICAL CASINGS INSTALLATION	3
<b>SECTION 2</b>	
HANGING THE DOOR PANEL	5
<b>SECTION 3</b>	
DOOR BOTTOM SEAL ADJUSTMENT	6
<b>SECTION 4</b>	
FLOOR GUIDE – DOOR SEAL ADJUSTMENT	7
<b>SECTION 5</b>	
Door Heat Cable Connection	9

---

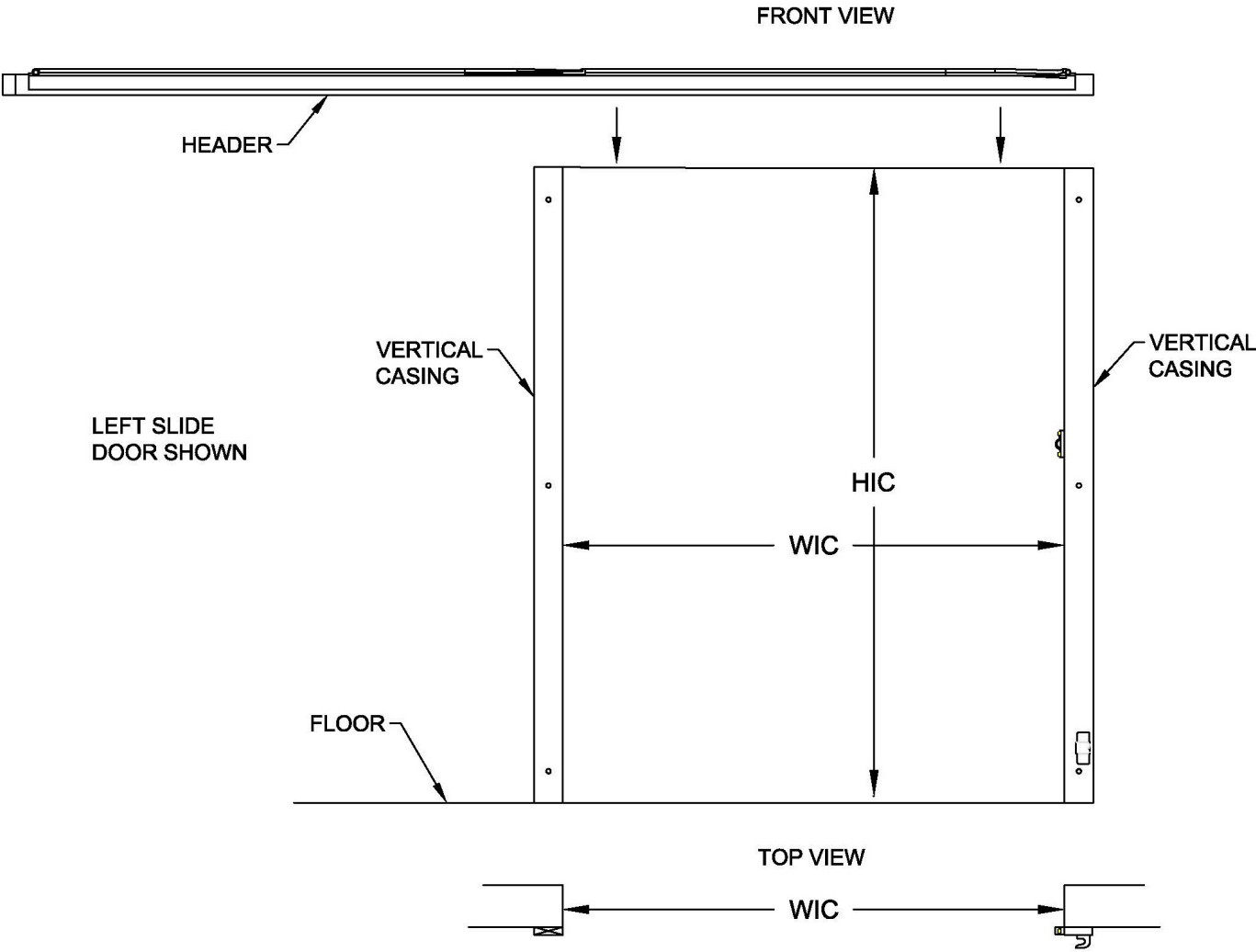
The following are general arrangement illustrations to aid you with device locations and terminology. Left slide door shown.



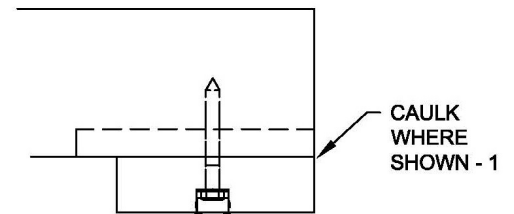
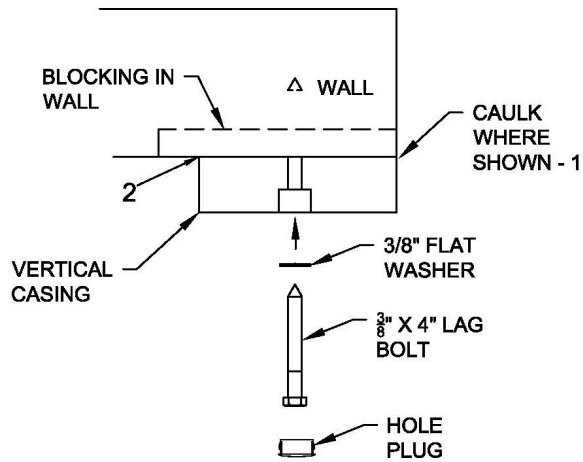
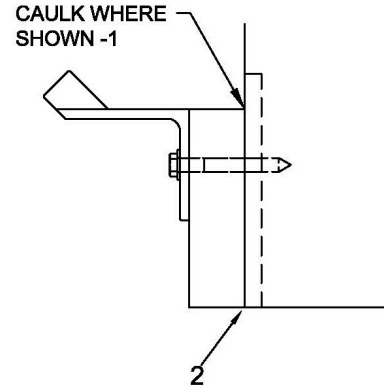
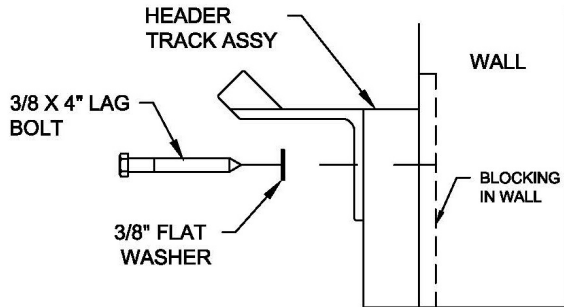
# SECTION 1

## HEADER & VERTICAL CASINGS INSTALLATION

Install entire header on top of vertical casings using fasteners through holes provided in header casing. Tighten all fasteners on casings and header. Re-check to see that complete assembly is plumb and level.



Fasten to wall as shown.



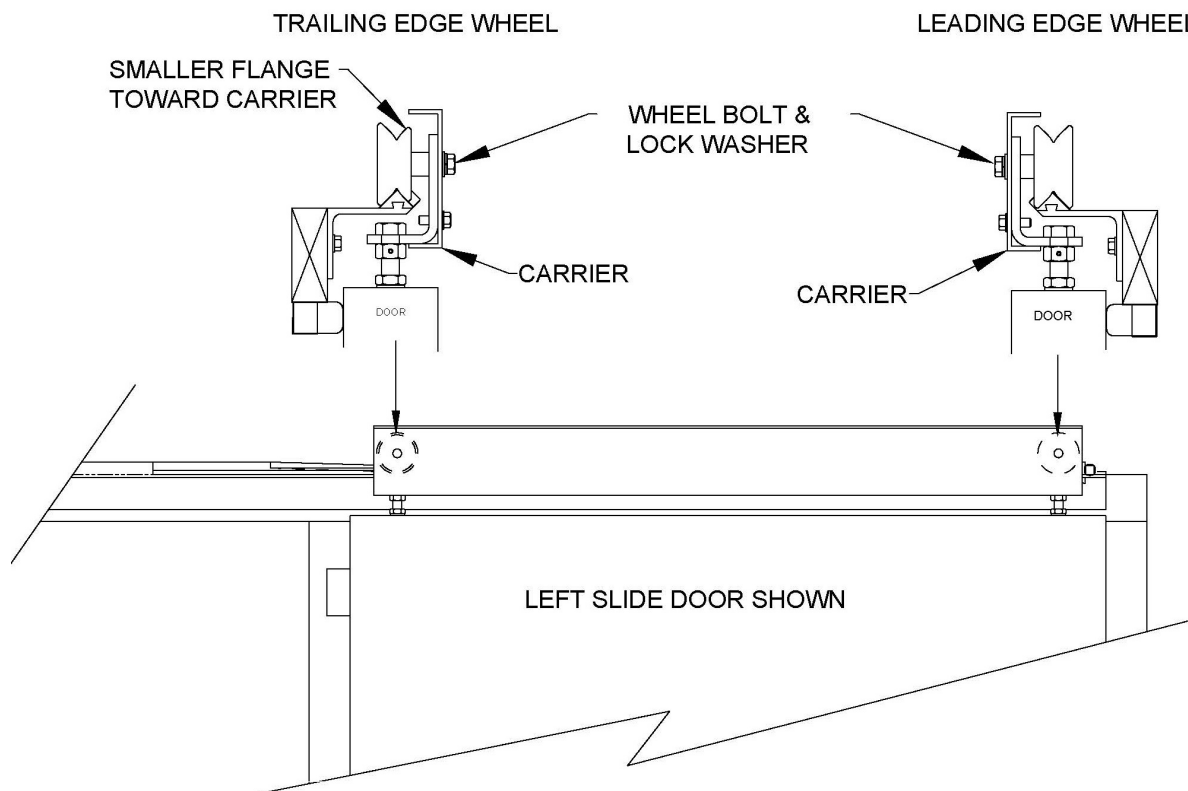
Use sealant to provide vapor seal between header, casings and wall. Compliance with above is essential to ensure proper contact between door and gaskets. Seal and attach securely

## SECTION 2

### HANGING THE DOOR PANEL

To hang the door position the door panel so the wheels are at the track ramps. These are located at the top of the track, where the carrier wheels would rest if the door is in the closed position. Once the door is located in front of the closed position remove the wheels from the carrier by removing the wheel bolt and lock washer

**NOTE:** The leading and trailing edge wheels are not the same and MUST be placed back in the same location as they were when shipped.



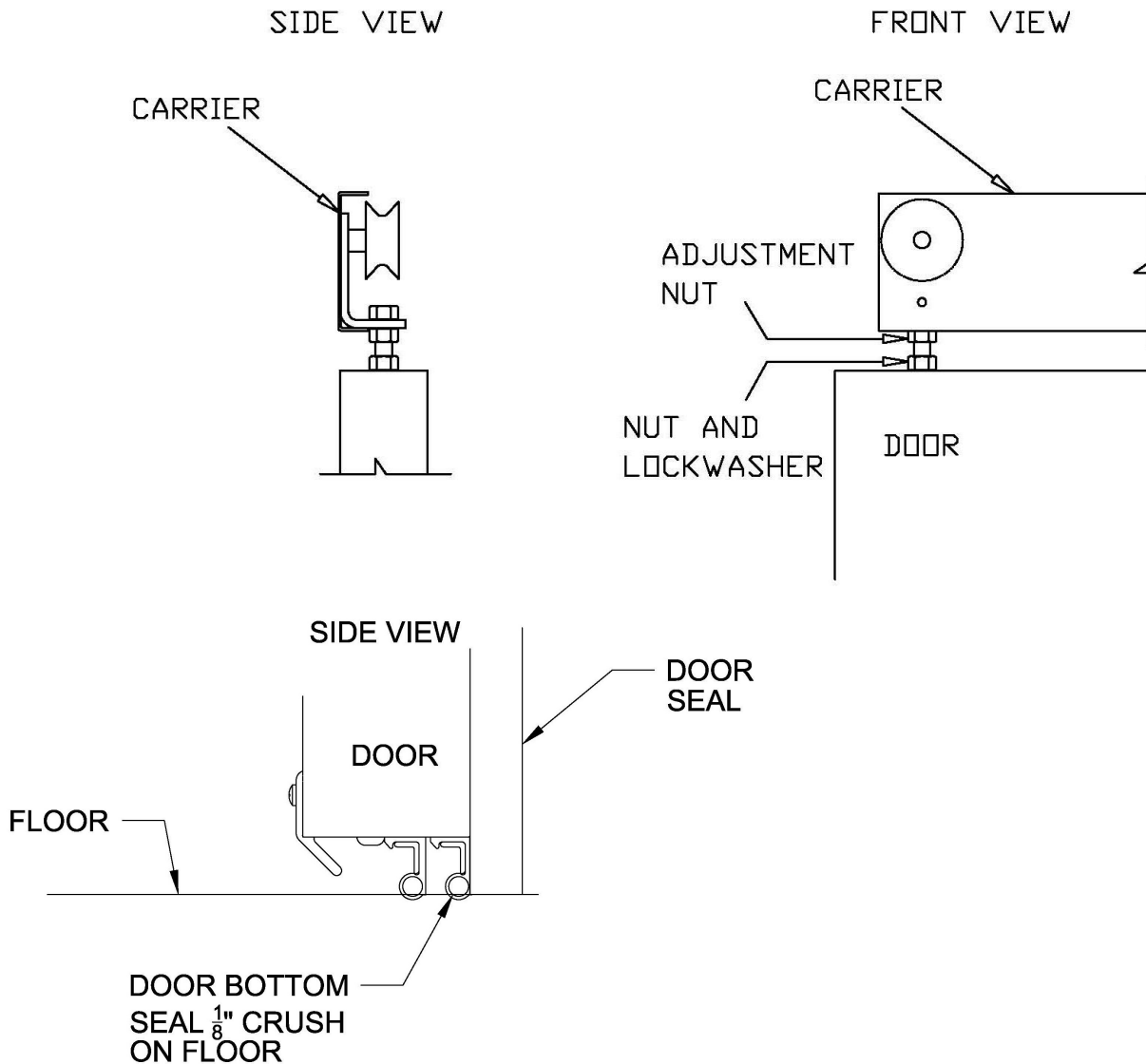
Once the wheels are removed from the carrier, move the door toward the header and re-install the wheels. **Make sure that the wheel bolts are tight.** The illustration shows the door with the leading and trailing edge wheels installed on the track correctly.

Once the door is hung, slide the door back and forth to the open and closed positions to ensure that they are free from obstructions and there are no obstructions. **Also ensure that the wheels drop down the wheel ramps.**

## SECTION 3

### DOOR BOTTOM SEAL ADJUSTMENT

The bottom seal should just contact the floor with a slight crush or bend to seal. To achieve this loosen the lower nut. Rotate the adjustment nut right to lower or left to raise the door. Once the door is at the required level tighten the lower nut. Proceed with the next adjustment screw adjustment if necessary, making sure that the leading edge of the door panel is plumb and perpendicular to the header when finished..

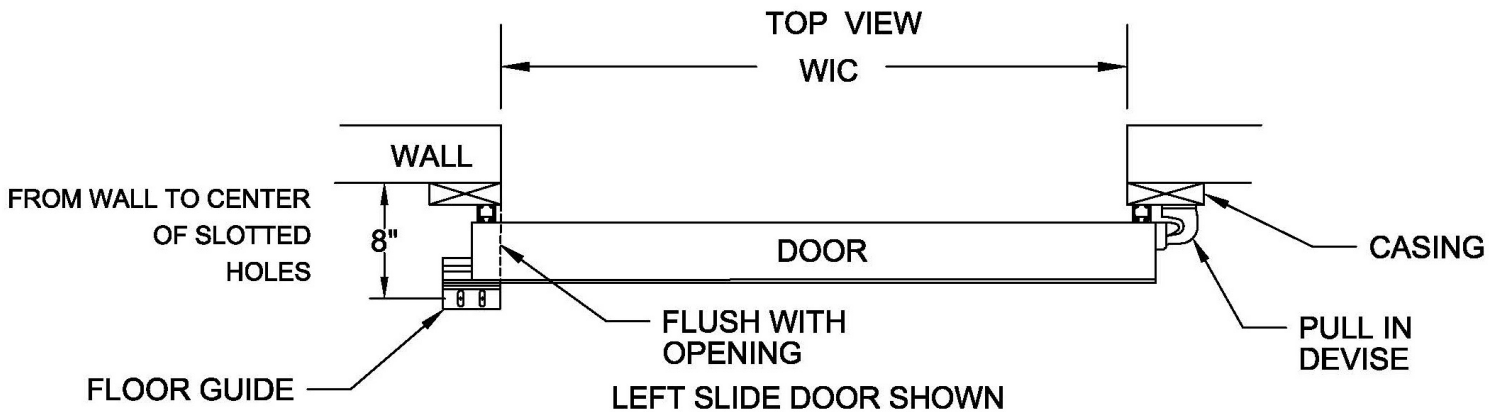




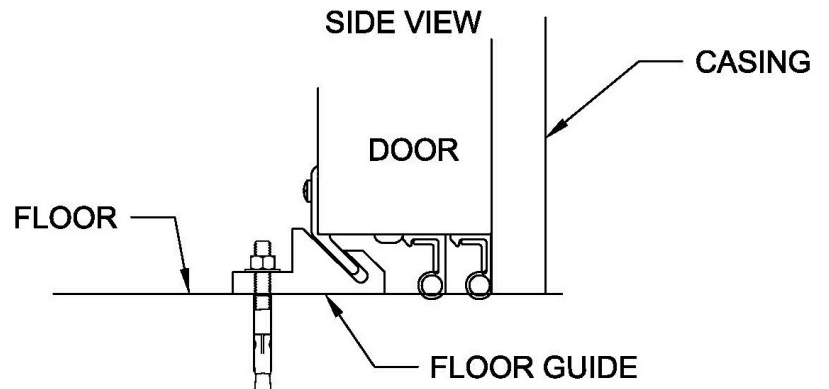
## SECTION 4

### FLOOR GUIDE - DOOR SEAL ADJUSTMENT

The door panel is held against the vertical casings and the header by the track on top / floor guide and pull in device . Door seals fills the gap between the door panel vertical casings and header. Install floor guide as shown. After installation move the door to the open and closed position , the door should open and close with very little effort. Slots are provided in the floor guide and pull in device if adjustment is required. Installation of left slide door shown.

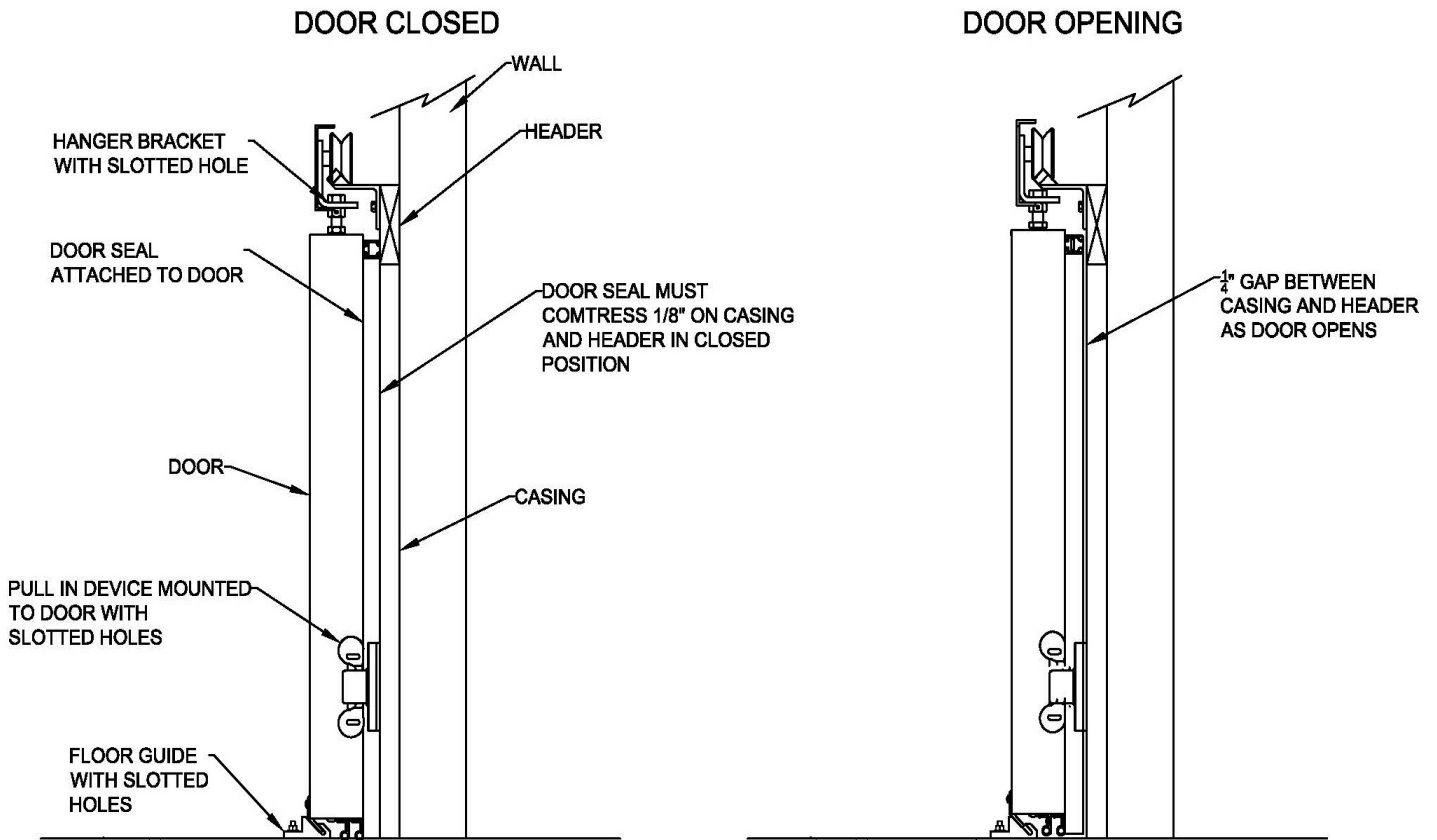


- MARK CENTER OF THE 2 SLOTS
- DRILL TWO  $\frac{3}{8}$ " HOLES  $2\frac{1}{2}$ " DEEP
- REMOVE ALL DUST AND DEBRIS FROM HOLE TO ENSURE PROPER SEATING OF ANCHOR BOLTS
- INSERT ANCHOR BOLTS - TIGHTEN TO 20 FT/LBS MAX.



The door panel seals should depress on the casings & header approximately 1/8" with no air gap to ensure a proper seal. As the door opens from the closed position it will lift up and out from the casings and header creating an approximate 1/4" gap between them, the 1/4" gap is important as it will prevent premature wear of the door seal as it opens. If it is not then the door seal must be adjusted. There are 3 areas of adjustment available, floor guide, pull in device or hanger bolt bracket. To adjust the door seals, place the door in closed position and adjust where required. Again when the adjustment is complete there must be a 1/4" gap between the door seal and casings and header as the door opens. Make sure all bolts that were loosened for adjustment are retightened.

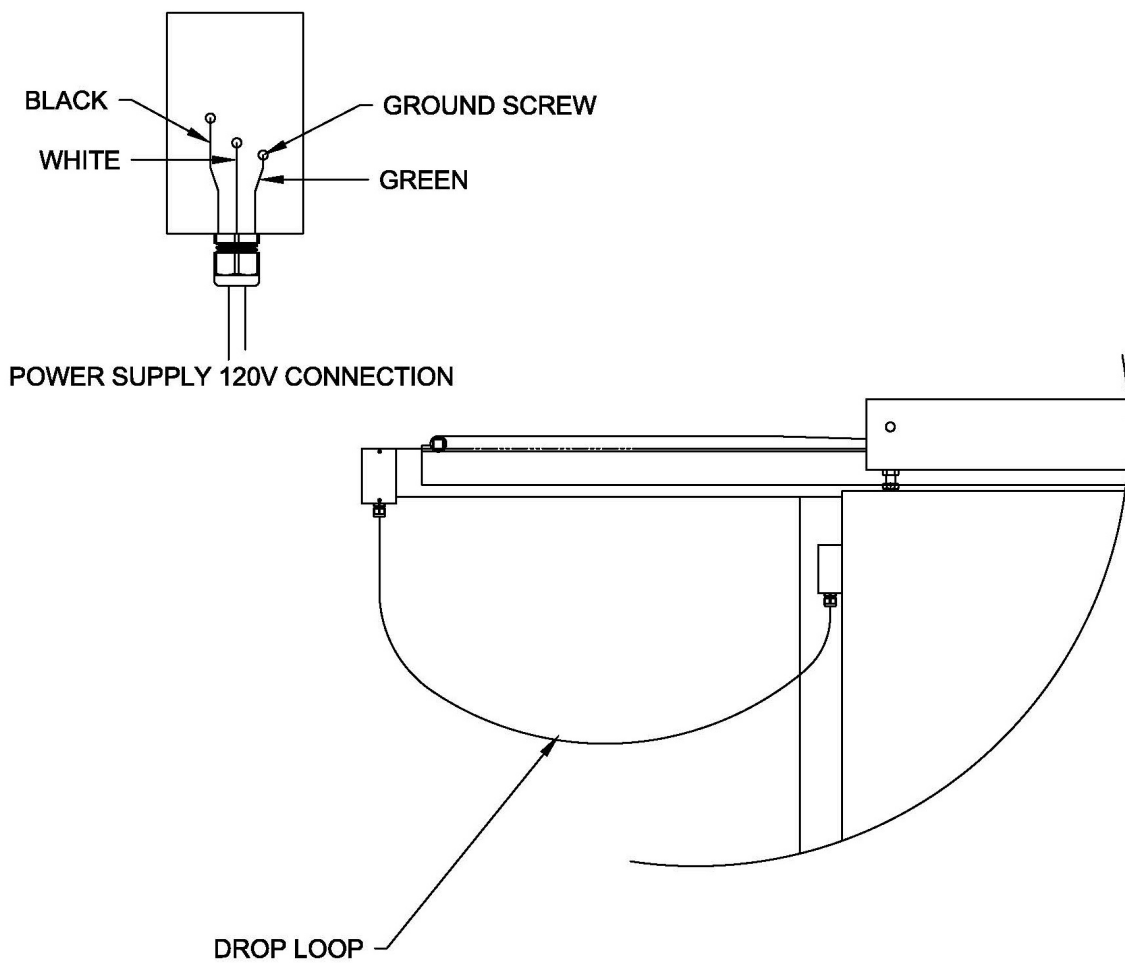
### SIDE VIEW



## SECTION 5

### Door Heat Cable Connection

Connect the drop loop from door to junction box on header. Connect 120V to header junction box through a lockable disconnect switch (by others). Turn power on and check for proper heating.





 CROWNTONKA®  ICS™  LOTEMP DOORS™  PREPRITE®  THERMALRITE®

Proud to be family-owned.