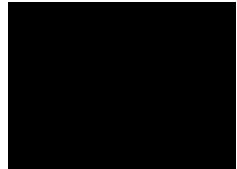


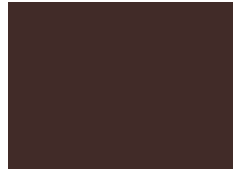
**STOCK COLORS** | 70% PVDF resin based coatings provide high-performance durability for exterior and interior applications. These coatings are designed to resist fading, chalking, and abrasion. Meets the requirement of AAMA 2605-13 and AAMA 620-02.



Black (02) •



Forest Green (11) •



Chocolate Brown (04) •



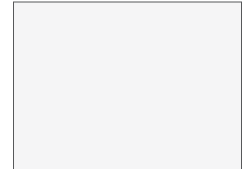
Sierra Tan (09) •



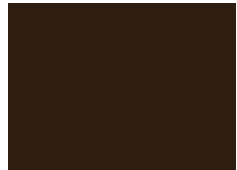
Sandstone (06) †



Rocky Grey (16) •



Ascot White (10) ■



Classic Bronze (01) †



Teal (19) •



Boysenberry (25) •



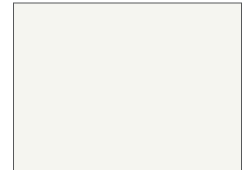
Rawhide (15) •



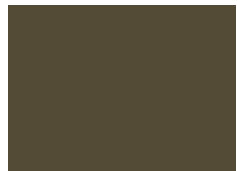
Regal Blue (18) •



Charcoal Grey (62) •



Bone White (26) †



Medium Bronze (03) †



Hemlock Green (30) •



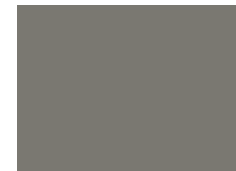
Redwood (07) •



Concord Cream (05) •



Slate Blue (21) •



Slate Grey (20) ▲



Hartford Green (27) •



Patina Green (12) •



Mission Red (08) •



Almond (36) •



Siam Blue (14) •



Dove Grey (13) ■

### Stock Materials

ALL Standard & Premium Finish Colors are available in:  
 24 ga. steel  
 .032 aluminum  
 .040 aluminum

### Additional Stock Materials Availability

#### Key:

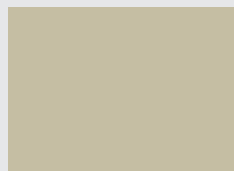
- ◆ 22 ga. steel
- ▲ 22 ga. steel, .050 aluminum
- † 22 ga. steel, .050 & .063 aluminum
- .050 aluminum
- .050 & .063 aluminum

Please inquire for custom materials and colors.

**PREMIUM FINISH** | PVDF resin based coatings, as noted above, with premium pigmentation to obtain metallic or deep color for desired aesthetics.



Antique Patina (24)



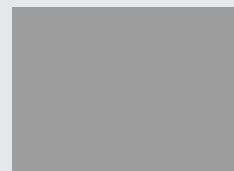
Champagne (31)



Coppertone (23)



Titanium (35) •



Silversmith (28) ◆



Brite Red (17) •

Our cool pigment finishes reflect infrared radiation, which results in cooler surface temperatures and maximum fade resistance.

Many of these products meet the qualifications for potential LEED credits and CRRC ratings.

70% PVDF finish carries a limited warranty against fading and chalking. Coated materials are non-staining and virtually maintenance free. Any surface residue is easily removed with conventional cleaning solutions or detergents.

Please contact us for any special colors and finishes not included in this literature.

GALVALUME® is an internationally recognized trademark of BIEC International Inc., and some of its licensed producers. Stainless steel products provided by ROOFINOX. Color representations on this literature are as close to the actual colors as modern printing allows. Metal color chips are available on request (this is a requirement for all premium colors) and should be used for final color selection. Color availability varies by material, gauge and profile. We reserve the right to modify, eliminate and/or change our products without prior notification. All colors are produced under stringent guidelines and tolerances that are identified within the coated metal industry. Batch to batch, variations may occur within these established industry tolerances. Care should be exercised by customer when mixing lots.

#### LAMINATES\*

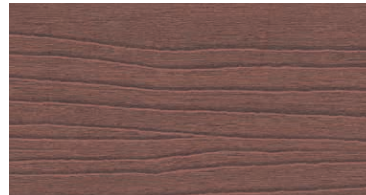
We offer five laminate patterns: four wood grain and one stacked stone. Our laminates are UV stable for exterior wall applications.



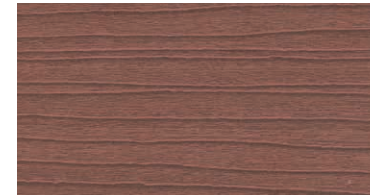
Cherry (81)



Oak (82)



Dark Teak (83)



Medium Teak (84)



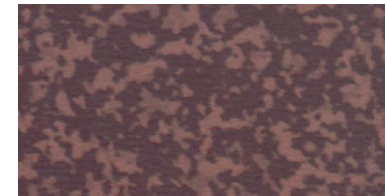
Stacked Stone (85)

#### OXIDE SERIES\*

Made to look like weathered steel with a rust-like appearance, you can combine the aesthetic appeal of aged metal with the advantages of brand new metal cladding with a 70% PVDF finish.



Copper Brown (42)



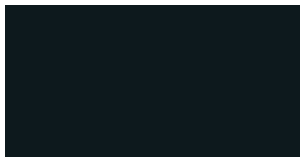
Tarnished Red (47)

#### NATURAL METALS

Due to their beauty, durability and time-proven performance, natural metals are a preferred material used in architecture. Natural metals will weather and patina naturally over time, adding character and aesthetic appeal to any building design. In addition to natural metals, we offer Acrylic Coated Galvalume® and anodized aluminum as standard available materials



Clear Satin Anodized (70)



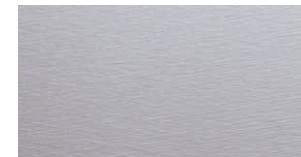
Dark Bronze Anodized (71)



Acrylic Coated Galvalume® (97)



Copper (49)\*



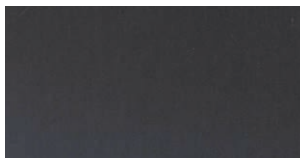
Classic Stainless Steel (40) \*



Terne Coated Stainless Steel (41)\*



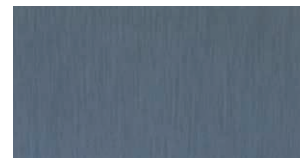
Grey Zinc (91)\*



Dark Zinc (92) \*



Brown Zinc (89) \*



Blue Zinc (94)\*



Red Zinc (95) \*



Green Zinc (96) \*

\* Special material. Pricing and availability dependent upon project specifics. Color chips available upon request. Specifications subject to change without notice.



Walk-In Coolers/Freezers · Restoration & Replacement Doors · Cook-Chill Specialty Solutions · Parts, Service & Warranty · Construction Services

Everidge.com | info@everidge.com | 888.227.1629  
15600 37th Ave N · Suite 100 · Plymouth · Minnesota 55446

CROWNTONKA™ | ICS™ | LOTEMP DOORS™ | PREPRITE™ | THERMALRITE™

Proud to be family-owned.