

EVERIDGE® Brand Identity Requirements

PRIMARY LOGO

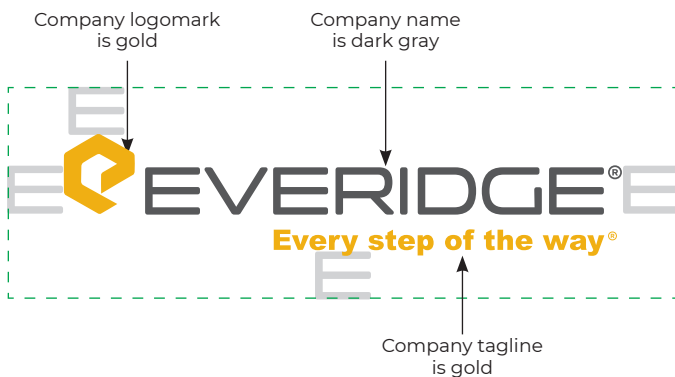
The Everidge® logo must not be re-keyed, redrawn or modified in any form. Do not deviate from the established visual standard by attempting to recreate the logo.

Logos are available in vector format, allowing scaling without type degradation.

Colors are available in PMS (spot color printing) or CMYK (4-color printing).

White space – The graphic-free zone should extend around the perimeter of the logo equal to the size of the “E” in the Everidge logo (the “E” free zone).

No other design element should encroach upon the logo.



SUB-BRAND LOGOS

All Everidge® sub-brand logos should follow the same guidelines as the primary logo.



COLORS

Here are all the color break-downs for Everidge® and the sub-brands.

NOTE: Colors change according to how they're being used. For this reason, and to keep the brand colors consistent, the color specs are different depending on their use or what they're being printed on. Make sure you're using the correct specs for each individual use.

4/C PROCESS (most printing uses)

0/20/90/5 (gold)

0/0/0/80 (dark gray)

SPOT PMS COATED (2-color printing on coated paper)

PMS 124C (gold)

PMS 425C (dark gray)

SPOT PMS UNCOATED (2-color printing on uncoated paper)

PMS 7405U (gold)

PMS 425U (dark gray)

RGB (web and online use)

234/170/0 (gold)

88/89/91 (dark gray)

HEX CODE (web and online use)

#EAAA00 (gold)

#53585A (dark gray)

TYPOGRAPHY

Both Montserrat and Arial are approved typefaces for Everidge® (print and web use).

Montserrat Thin

Montserrat Thin Italic

Montserrat Extra Light

Montserrat Extra Light Italic

Montserrat Light

Montserrat Light Italic

Montserrat Regular

Montserrat Italic

Montserrat Medium

Montserrat Medium Italic

Montserrat Semi Bold

Montserrat Semi Bold Italic

Montserrat Bold

Montserrat Bold Italic

Montserrat Extra Bold

Montserrat Extra Bold Italic

Montserrat Black

Montserrat Black Italic

Arial Regular

Arial Italic

Arial Bold

Arial Bold Italic

Arial Black

Arial Black Italic

LOGO USAGE

Logo usage is restricted to the following guidelines.

All logos may only be treated in the specified PMS or CMYK colors indicated. The logo may also appear as indicated in the samples below.

Background colors are acceptable provided they enhance the logo's visibility. Background patterns are not acceptable. Make sure there is sufficient contrast between the background and the logo.

Primary Logo with Tagline



Full color logo – Primary use.



Black logo – Use this logo in one-color applications.



Reversed logo – Use this logo in one-color applications.

Primary Logo without Tagline

Any of the primary logos applications can be used without the tagline. It's recommended to use the logo with the tagline at least the first time it appears. Some exceptions of this are in cases the logo is used so small that the tagline is not legible, such as on small promotional items. In those usages, the logo can be used without the tagline.

In Text

Always use a registered trademark after the brand name. Follow the examples below when referencing both brand name and sub-brands in text.

"Everidge® provides quality..."

"Crowntonka® by Everidge® is..."

"ICS™ by Everidge® is..."

"Lotemp Doors™ by Everidge® is..."

"Thermalrite® by Everidge® is..."

"PrepRite™ by Everidge® is..."

SUB-BRAND LOGO USAGE

All Everidge® sub-brand logos should follow the same guidelines as the primary logo, including black and reversed versions.

When the sub-brands are used along with the primary logo, all sub-brands should be used at 70% or smaller than the primary company logo.



BRAND LOCKUP USAGE

These lockups can be used as sign-offs on literature.





PrepRite

653C
CMYK: 84/54/3/10
RGB: 50/98/149
HEX: 326295



PrepRite

654C
CMYK: 100/73/0/33
RGB: 0/58/112
HEX: 003A70



ThermalRite

7544C
CMYK: 53/34/22/10
RGB: 118/134/146
HEX: 768692



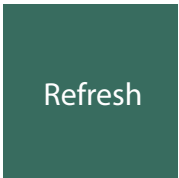
ThermalRite

7545C
CMYK: 74/50/31/36
RGB: 66/85/99
HEX: 425563



Website

2379C
CMYK: 78/60/29/45
RGB: 59/69/89
HEX: 3B4559



Refresh

5545C
CMYK: 70/27/54/35
RGB: 67/105/91
HEX: 43695B



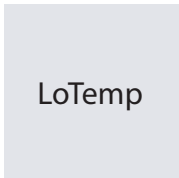
CrownTonka

Cool Gray 9
CMYK: 50/40/34/17
RGB: 117/120/123
HEX: 75787B



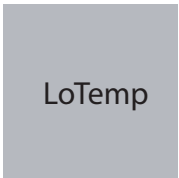
CrownTonka

Cool Gray 10
CMYK: 57/46/40/25
RGB: 99/102/106
HEX: 63666A



LoTemp

Cool Gray 1
CMYK: 10/7/5/0
RGB: 217/217/214
HEX: D9D9D6



LoTemp

Cool Gray 5
CMYK: 28/21/18/1
RGB: 177/179/179
HEX: B1B3B3



ICS

7527C
CMYK: 12/10/14/0
RGB: 214/210/196
HEX: D6D2C4



ICS

7535C
CMYK: 25/21/31/3
RGB: 183/176/156
HEX: B7B09C



Construct
Services

7519C
CMYK: 41/54/65/50
RGB: 93/75/60
HEX: 5D4B3C



Construct
Services

7533C
CMYK: 40/60/77/71
RGB: 71/55/41
HEX: 473729



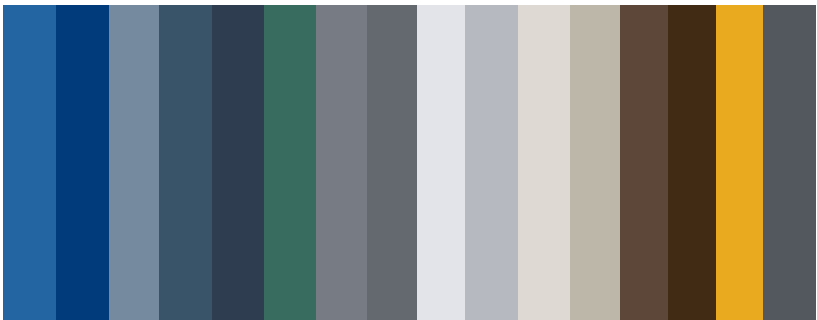
Everidge

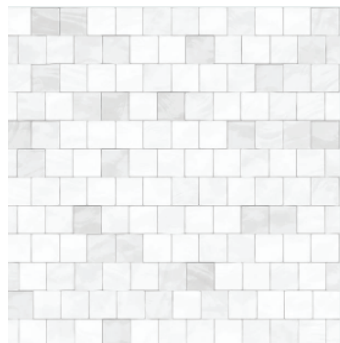
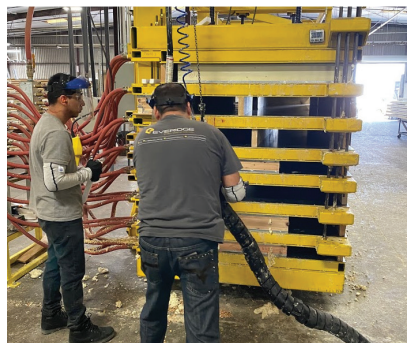
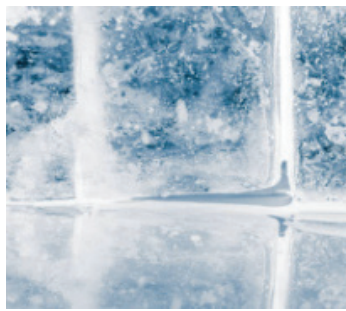
124C
CMYK: 0/29/100/1
RGB: 234/170/0
HEX: EAAA00

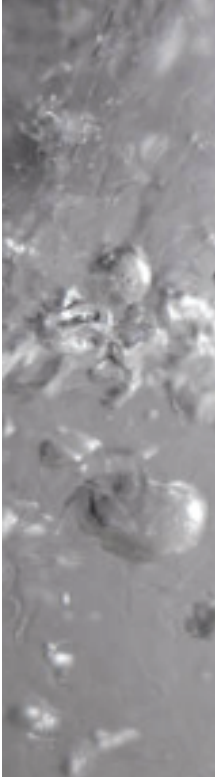


Everidge

425C
CMYK: 63/51/45/33
RGB: 84/88/89
HEX: 545859







CROWNTONKA[®]

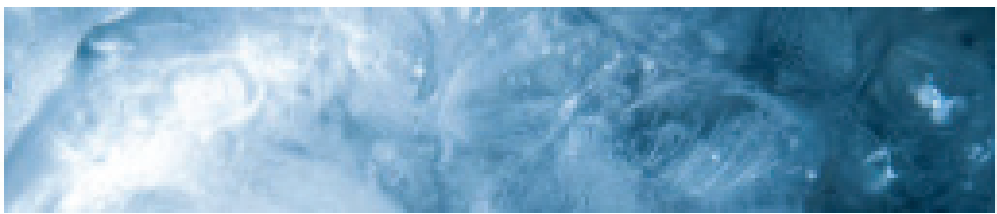
BY EVERIDGE[®]



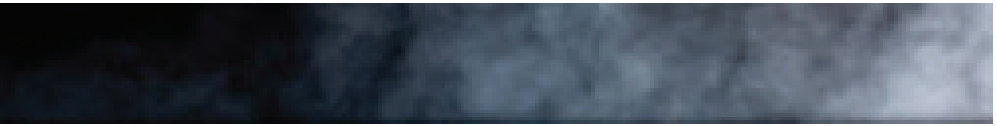


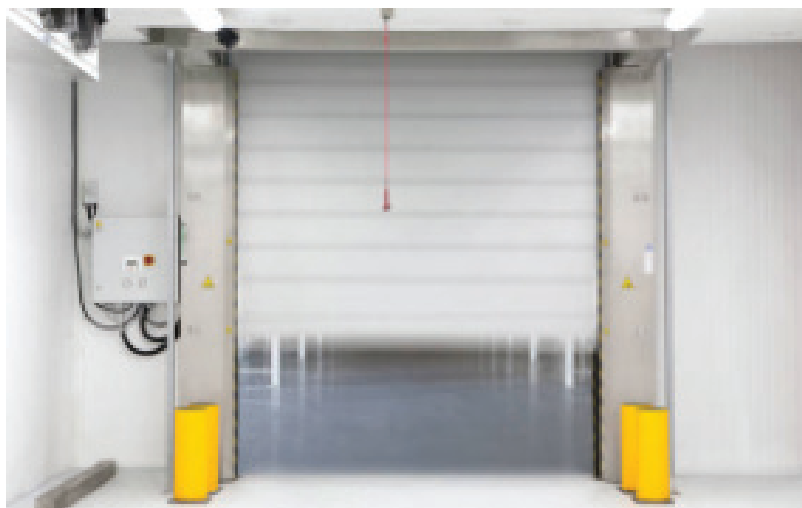
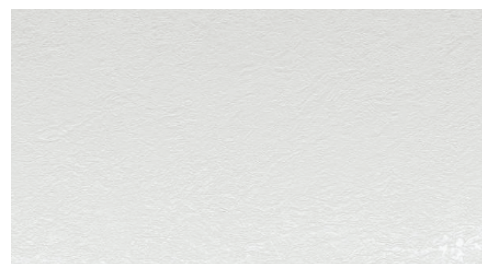
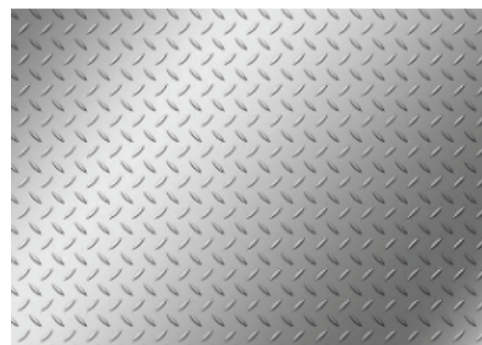
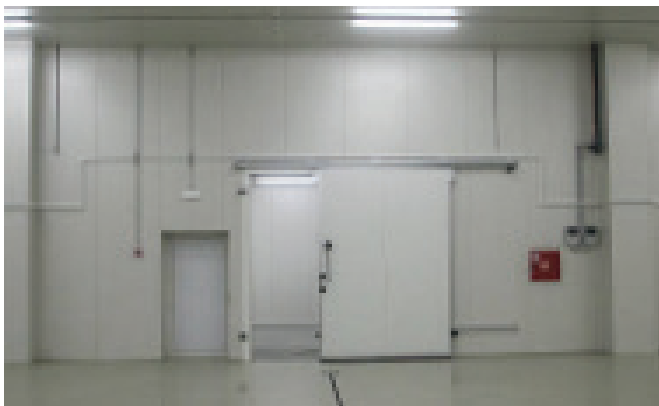
 **THERMALRITE®**
BY EVERIDGE®





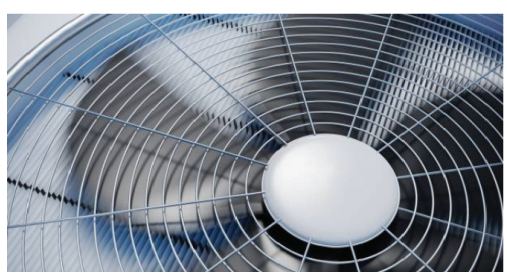
 **PREPRITE™**
BY EVERIDGE®



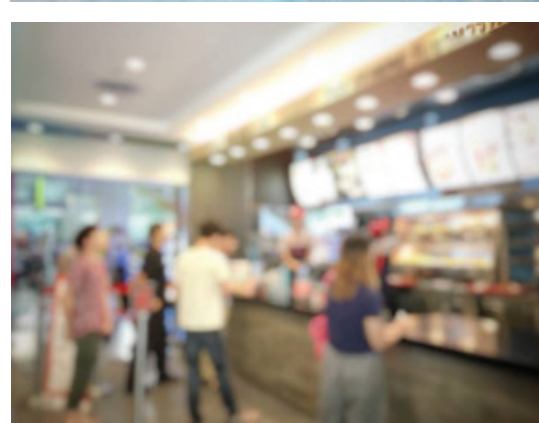
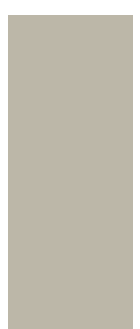


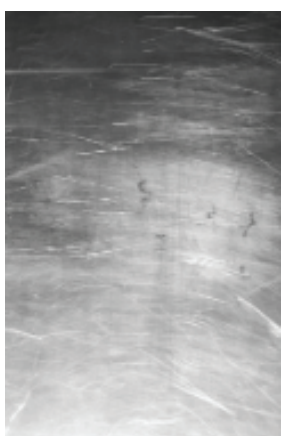
LOTTEMP DOORS™

BY EVERIDGE®



 **ICS**TM
BY **EVERIDGE**[®]





REFRESH™



