

## SPECIFICATION SHEET # 101 – Single Horizontal Slider Door - Manual

Our single horizontal manual sliding doors are the perfect solution for applications where space is only available on one side of the door opening. Single sliding doors provide access for personnel and load handling traffic, where space restricts the use of hinged, swing doors or where installation space is limited.

### PRODUCT FEATURES

#### Door Panel

- Constructed with aircraft quality extruded aluminum internal frame with reinforced mitered corners
- Panel clad with 26ga stucco embossed white galvanized steel
- Meets USDA and CFIA requirements

#### Insulation

- NON-CFC polyurethane
- "R" value of 32 at 4" and 48 at 6"

#### Door Frame

- Header and casing in white or gray HDPE
- Optional clad with panel matching steel

#### Hardware

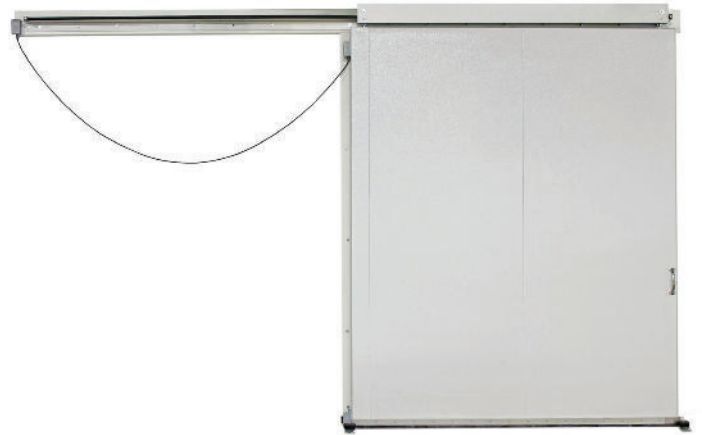
- Extruded aluminum door track with down and in motion to ensure assure a ramp tight door seal when closed and immediate gasket clearance when opening
- Two heavy-duty track rollers
- Two floor-mounted stay rollers
- All hardware with corrosion resistant coating

#### Gaskets

- Adjustable bulb type reinforced neoprene seals mounted to casings and header
- Sweep sill reinforced gasket at 4 sides of door bottom

#### Freezer Door

- As above with full perimeter 120V heater cable around door
- Requires a separate 120V AC, single phase connection, by others
- Additional heated seals required for -20° F



### OPTIONS

- Kickplates
- Vision panels
- Jambs, back frames, and locking provisions
- Finishes: 26 ga 304-2B or 304 #4 stainless steel, 26 ga stucco embossed or smooth galvanized steel
- Rain hood track cover

# SPECIFICATION SHEET # 101 – Single Horizontal Slider Door - Manual

## PART I – GENERAL

### 1.0.1 SCOPE

Supply, where indicated on plans LoTemp Doors' cooler or freezer single slide manual door.

### 1.0.2 RELATED WORK

Opening preparation, miscellaneous or structural metal work, electrical wiring, wire, conduit, fuses and disconnect switches are in the scope of work of other divisions or trades.

## PART II – SPECIFICATION

### 2.0.1 SUBSTITUTIONS

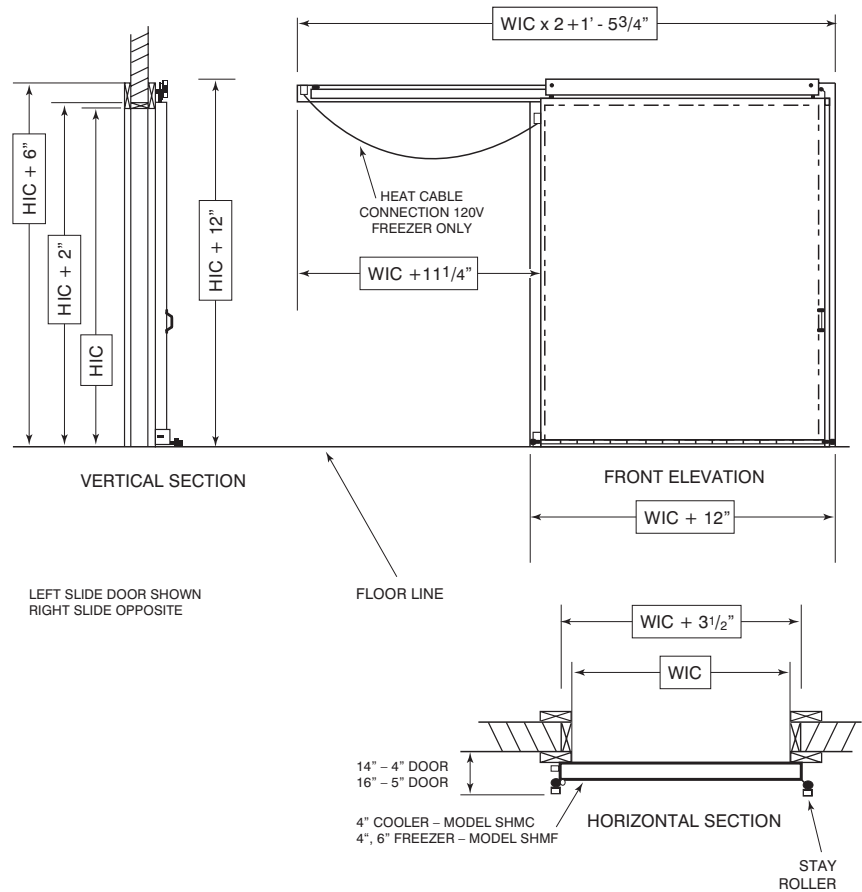
This specification is written with LoTemp Doors as the basis of acceptable performance. No substitutions will be considered unless a written request is received in the Architect's office at least 14 days prior to date for receipt of bids.

### 2.0.2 SUBMITTALS

In compliance with the specification requirements, submit detailed shop drawings for each door showing in clear detail all mounting requirements and accessories.

### 2.0.3 QUALITY ASSURANCE

Doors shall be installed in accordance with Architect's plans and specifications and LoTemp Doors' written installation instructions, drawings, and recommendations. Doors shall be guaranteed against defective materials and workmanship for a period of 1 year from date of shipment.



## PART III – EXECUTION

### 3.0.1 – INSTALLATION

Doors shall be mounted in full accord with the detailed instruction of the door manufacturer and contract documents. When mounting the door and framing, the mounting surfaces shall be set true and level without distortion and shall be shimmed and caulked to assure tightness and true fitting and be securely lagged. After the doors are hung, they shall be checked for mechanical and electrical operation, and tight and uniform gasket sealing. Connection of the door heaters are the responsibility of electrical contractor.

### 3.0.2 – PRODUCT DELIVERY, STORAGE AND HANDLING

Each cold storage door shall be securely crated so as to protect the door from damage during shipment and handling. Door identification number shall be clearly marked on the outside of each crate.

### 3.0.3 – CLEANING AND ADJUSTMENT

Clean all doors of excess sealant, grease, stain, fingerprints and construction dust prior to final inspection to the satisfaction of the Architect/owner. Adjust all doors to smooth, proper operating condition, including proper sealing prior to turnover of facility to owner.



Proud to be family owned

Walk-In Coolers/Freezers • Restoration & Replacement Doors • Parts, Service & Warranty • Construction Services

15600 37th Ave N • Suite 100 • Plymouth, Minnesota 55446 • 888-227-1629 • [www.everidge.com/lotempdoors](http://www.everidge.com/lotempdoors) • [info@everidge.com](mailto:info@everidge.com)