

ANTI-BACTERIAL, SLIP RESISTANT FLOORING

Sanisteel[®] is an anti-bacterial, slip resistant pre-coated steel which is available for floors across our wide range of walk-ins. Available only through ThermalRite, Sanisteel[®] is certified as food safe, providing total peace of mind for hygiene in food service and food retailing environments. Independent tests have also demonstrated that Sanisteel[®] delivers unparalleled slip resistance characteristics, even when wet, for improved workplace safety.

- Better slip resistance than ADT by ASTM F 1679 test standards
- Anti-bacterial pre-coated steel
- Eliminates many harmful and potentially dangerous bacteria strains
- NSF certified
- High resistance to corrosion and scratches
- Available only from ThermalRite and the Everidge brands

SLIP RESISTANCE

The table summarizes the comparative results for floor materials tested to ASTM F-1679 standards. Green shaded values indicate a slip resistance which is considered acceptable. Red shaded values indicate the surfaces which do not meet the desired slip resistance under the conditions tested. All products performed well dry, but the Sanisteel[®] material was the only one of the three which proved acceptable when wet.



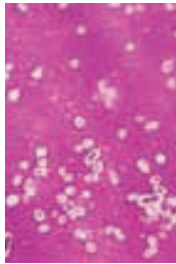
Material Identification	ASTM F 1679	Dry	Wet
Spray Coated Smooth Aluminum		>0.93	0.04
Aluminum Tread-plate		0.73	0.40
ThermalRite Sanisteel [®]		>0.98	0.56

sanisteel 

ANTI-BACTERIAL, SLIP RESISTANT FLOORING



A



B



C



D



E



F



G

Sanisteel® activates its anti-bacterial characteristics in the presence of the environmental conditions, which favor the proliferation of bacteria, fungi and algae. It has a dual action, inhibiting the growth of germs and eliminating those which may be present.

Sanisteel® is proven to be effective against a wide range of bacteria, including:

- A - Escherichia coli
- B - Klebsiella pneumoniae
- C - Staphylococcus aureus
- D - Salmonella typhimurium
- E - Listeria monocytogenes
- F - Legionella pneumophila
- G - Pseudomonas aeruginosa

TECHNICAL DETAILS & SPECIFICATIONS

Film coating thickness: from 100 µ to 200 µ

Standard metal supports

- Hot dip galvanized steel
- 19 GA (1.2mm)

Dimensions

- Thickness of metal support: from 0.3 to 2 mm .018 to .078 inches
- Sheet: Max width 1400 mm 55.118 inches
- Sheet: Max length 5000 mm 196.85 inches
- Strip: Max width 1400 mm 55.118 inches
- Strip: Minimum width 19 mm .748 inches
- Coil: I.D. 500 mm > 20"
- Coil: O.D. 1550 mm 61.02 inches

Protective film

Sanisteel® film

Adhesive

Surface treatment

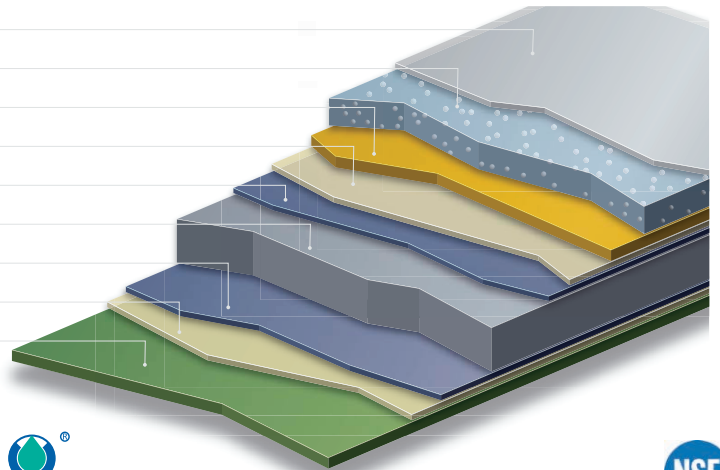
Zinc

Metallic support

Zinc

Surface treatment

Back coat Primer



sanisteel 



 **EVERIDGE**[®]
Every step of the way[®]

 CROWNTONKA[®]  ICS[®]  LOTEMP DOORS[®]  PREPRITE[®]  THERMALRITE[®]

Proud to be family-owned.

Walk-In Coolers/Freezers • Restoration & Replacement Doors • Cook-Chill Specialty Solutions • Parts, Service & Warranty • Construction Services

15600 37th Ave N • Suite 100 • Plymouth, Minnesota 55446 • 888-227-1629 • www.Everidge.com • info@everidge.com